



---

# WAGNER BAND

## **Thunderbird Invitational**

Saturday, February 7<sup>th</sup>, 2026  
Karen Wagner High School  
Hosted by The Wagner Band &  
Wagner Band Boosters

Thank you for coming to our contest! Please read this packet carefully. If you have any questions, comments, or concerns you can email me at [jperez906@judsonisd.org](mailto:jperez906@judsonisd.org) or call me at (210) 662 5040.

From our program to yours, best of luck this season!

**J. Raul Perez**

Director of Bands  
Wagner High School

# UPDATED MAPS!

Due to  
construction  
we've had to  
update our  
contest flow and  
parking maps.

# BUS PARKING

Please send this to your bus drivers.



Bus Drop Off - Bus Parking - Bus Exit



UPDATE: Students will now be dropped off and enter campus where props and guard floors have always entered. **NOT THE CAFETERIA.**  
Cafeteria back road access will be blocked due to construction.

# TRAILER PARKING

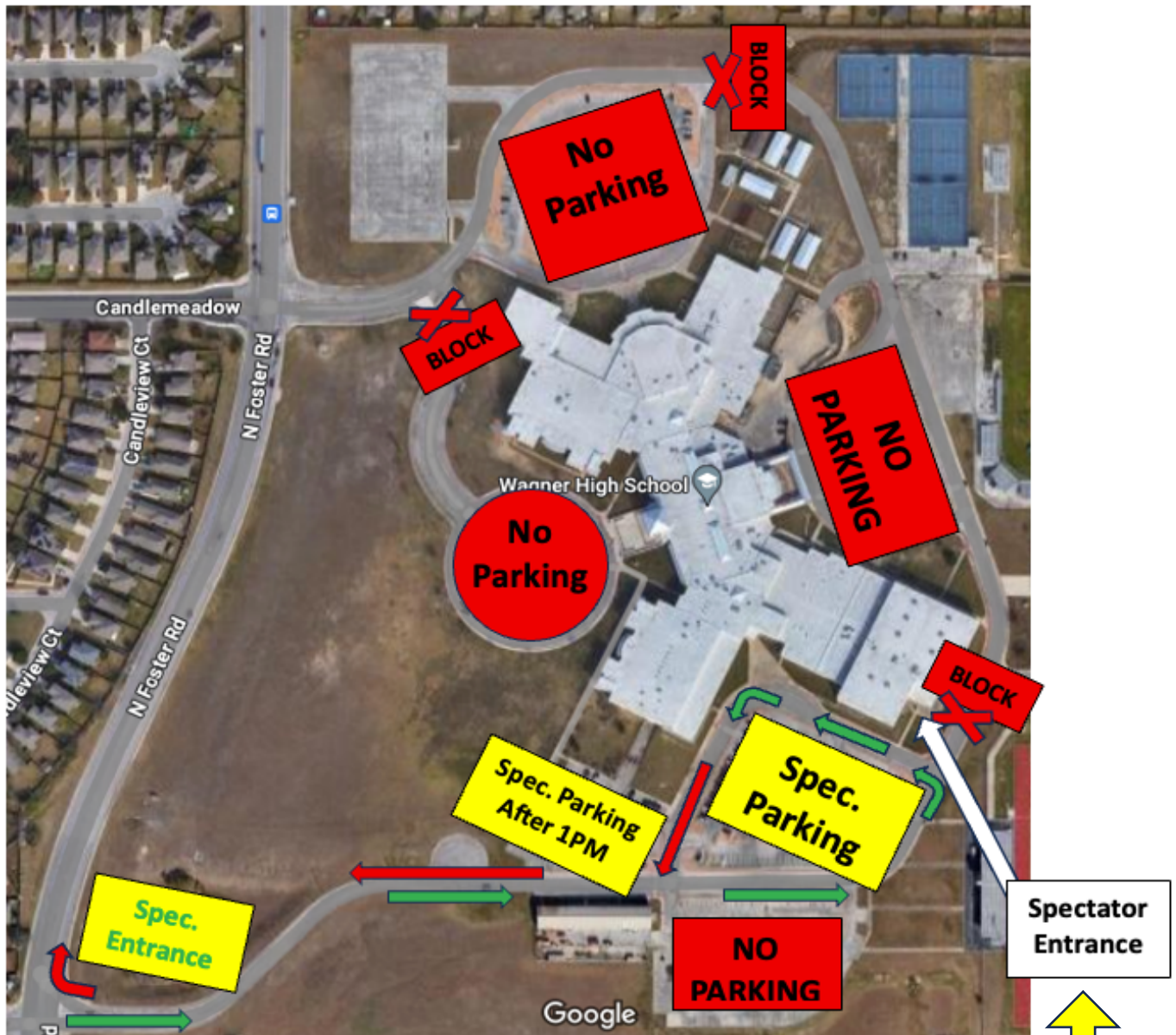
Please send this to your trailer drivers.



Coming from I-10, going North on Foster Road, the right turn into Wagner High School is tight for an 18-wheeler. We recommend that you loop around the parking lot and turn left into campus. This will avoid any damages to your trailer and equipment.

# SPECTATOR PARKING

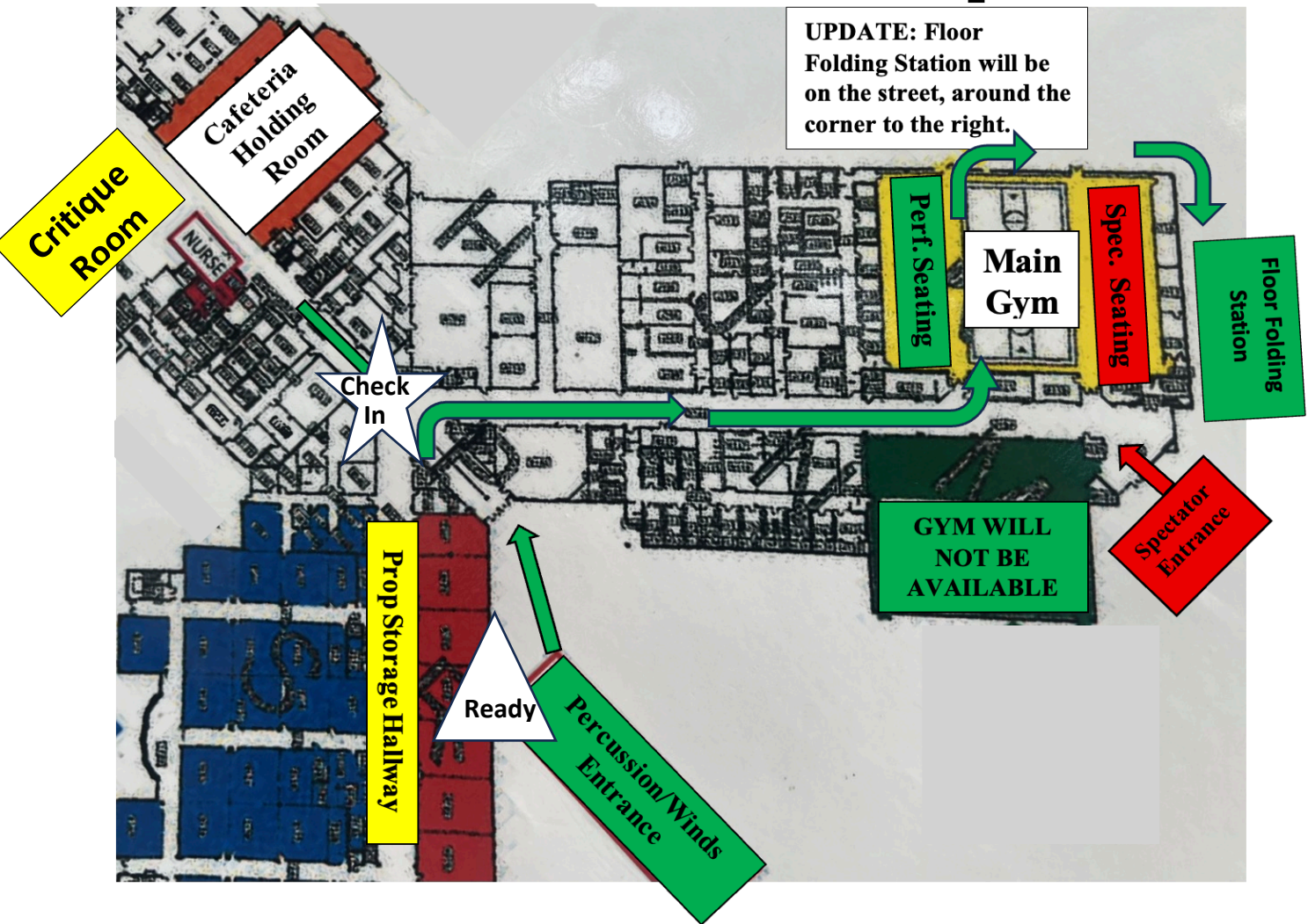
Please send this to your students' parents.



Parents will only be allowed to enter through the spectator entrance marked on the map.

\*\* Los padres solo podran ingresar por la entrada para espectadores marcada en el mapa.

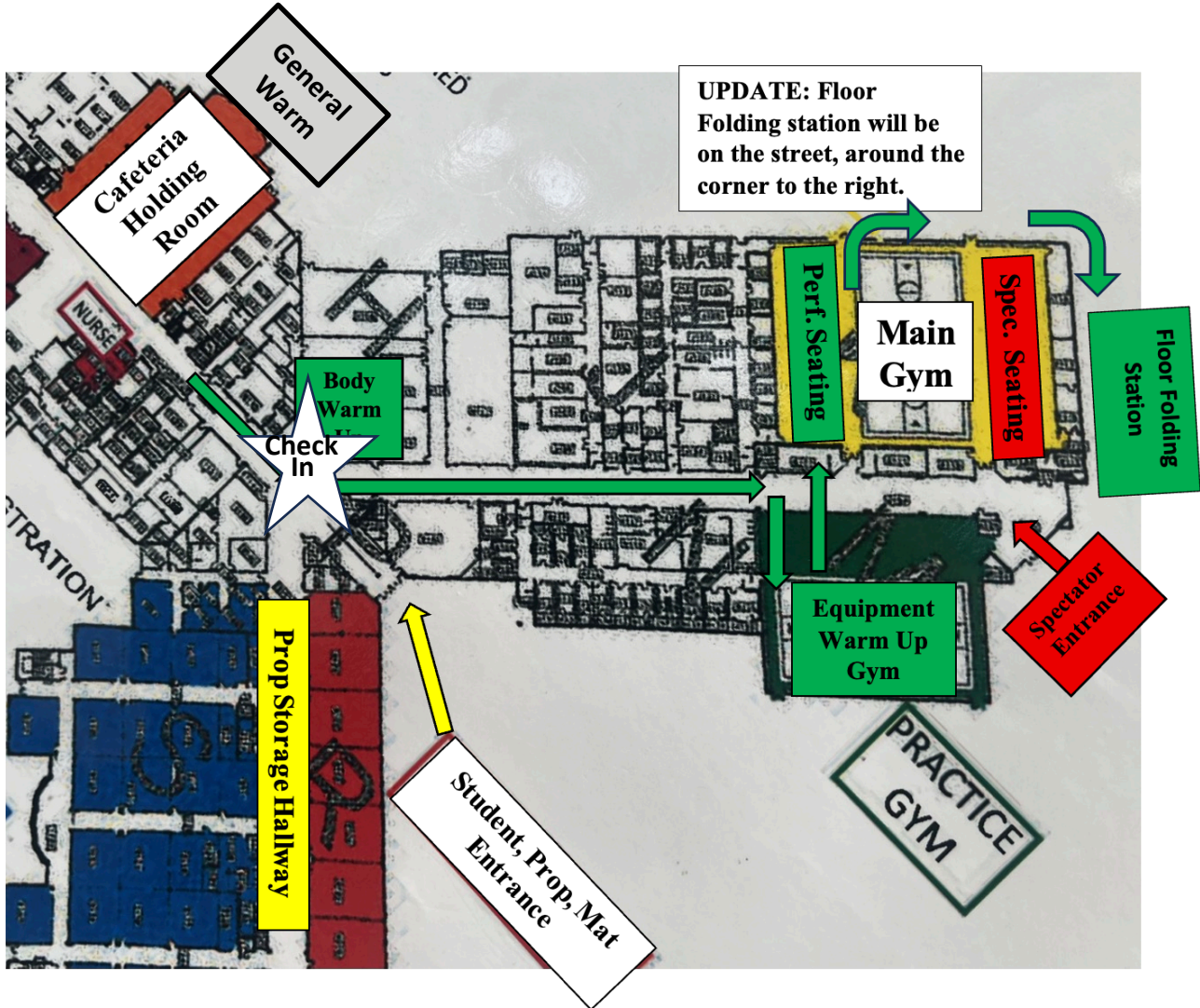
# Wagner High School TECA Winds and Percussion Contest Flow Map



Unloading and Loading: Percussion equipment will unload and load at the percussion trailer parking zone only and NOT ON THE CURB, please view the Trailer Parking for reference.

Warm Up Area for percussion are labeled on the Trailer Parking. Please be mindful of the space and remember it is on a first come first serve basis.

# Wagner High School **TECA GUARD** Contest Flow Map



**Unloading and loading:** Guard equipment and props drop off will happen at the curb where students will be dropped off, please view the **Bus Parking** for reference.

**General Warm Up:** Can happen outside the cafeteria. Absolutely no spinning or tossing inside the cafeteria or hallways.

# Winds & Percussion Units

## CHECK-IN

**Winds and Percussion:** The check-in will be located at the student entrance, near the bus drop. Please view the star in the **Winds and Percussion Contest Flow Map** for reference. At check-in, performers must show the check-in representative that equipment is appropriately padded and taped. Schools are responsible for any damages to the gym floors due to bad taping or bad wheels.

## WARM UP

**Winds:** Winds can warm up at the general warm up area at any time and be at the ready triangle (please view **Contest Flow Map** for reference) 15 minutes before your performance time. If you want an indoor warm up time you need to be at the ready triangle at these designated times (**Somerset HS** Ready Triangle-7:00AM Warm Up - 7:10 and **La Vernia** Ready Triangle 7:25AM Warm Up 7:35) so that we can walk you to the other side of the building to the band hall. If you miss your ready time, we will not be able to get you a full 20 minute indoor warm up due to logistics and timelines.

**Percussion:** Percussion warm up area is labeled on the **Trailer Parking Map**. Please be mindful of the space and remember it is on a first come first serve basis.

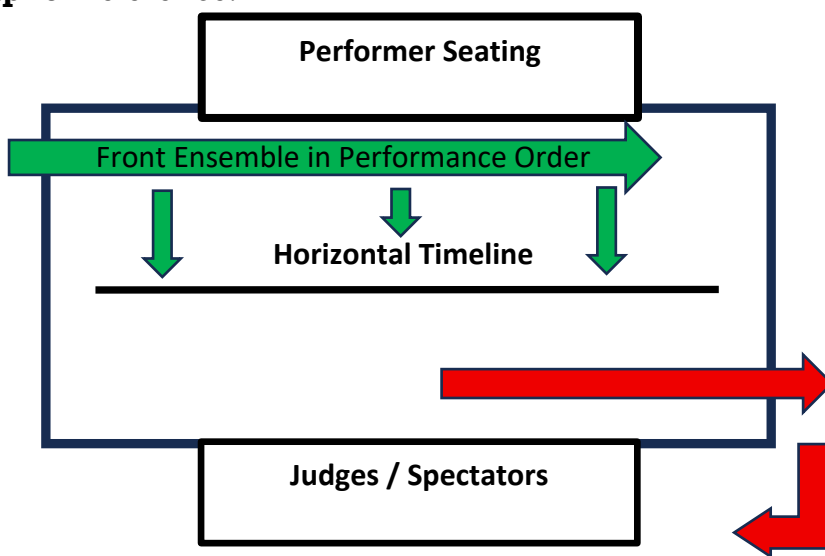
## READY POSITION

**Winds:** If you choose to have an indoor warm up, we will walk you to the gym from the band hall. If you choose to warm up outside you just have to be in the ready triangle (please view contest flow map) 15 minutes before your performance time.

**Percussion:** and winds that don't want to have an indoor warm up, please be ready to go, lined up, at the sidewalk, at the ready triangle 15 minutes before your performance time to avoid delays. Please view the ready triangle in the **Winds and Percussion Contest Flow Map** for reference.

## ENTER / EXIT

Groups will enter from the back left (green arrow) and exit front right (red arrow). Horizontal timeline will be used for winds and percussion units. Once units exit take a right and then a right around the corner for Floor Fold Station on street. Please see contest flow map.



# Guard Units

## CHECK-IN

**Guards:** The check-in will be located at the student entrance, near the bus drop off. Please view the star in the **Guard Contest Flow Map** for reference. At check-in, performers must show the check-in representative that equipment is appropriately padded and taped. Schools are responsible for any damages to the gym floors due to bad taping or bad wheels.

## UNIT HOLDING AREA

Cafeteria will be the holding area for this contest. Please be mindful of how much space your unit takes. Spaces will be at a first come first serves basis. Please always have an adult supervising the performing units while in the holding area. Students and staff may not spin, toss, or maneuver equipment inside any of the buildings at any time other than in designated areas. You may use the area outside of the cafeteria for general equipment warmup.

## PERFORMANCE

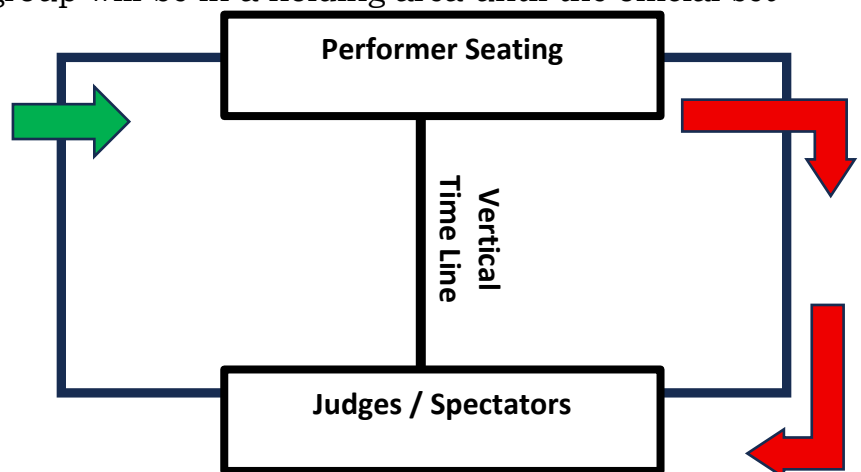
**5 Minutes Before Warm-Up** – Please report to the volunteer table close to the front of the cafeteria. Equipment and props will be double checked for appropriate taping for protection of the gymnasium floors.

**Body Warm-Up** – From the volunteer table, students will proceed to body warm-up located in the Wagner Dance Studio. Students may stretch or do a run through of body mechanics. No equipment will be utilized during the body warm-up segment of the official warm-up time. A sound system will be available.

**Equipment Warm-Up** – From Body Warm-Up, students will proceed to equipment warmup. The group will be in a holding area until the Equipment Warm-Up time starts. A sound system will be available. After Equipment Warm-Up, students will be led to the performance area. The group will be in a holding area until the official set-up and performance time starts.

## ENTER / EXIT

Groups will enter from the back left (green arrow) and exit back right (red arrow). Horizontal timeline will be used for winds and percussion units. Once units exit take a right and then a right around the corner for Floor Fold Station on street. Please see **Contest Flow Map**.



# All Performing Units

All contest rules and regulations from the 2026 TECA Constitution, By-Laws, and 2026 WGI Rule Books will be followed.

**POST PERFORMANCE:** After you exit the performance area, staff members should make sure that equipment is put away. Guards will be directed to a floor-folding area on the street (please see Contest Flow Maps for reference). Please fold floors quickly and exit the area to prevent a “Traffic jam.”

## RETREAT

Captains will line up in the warm-up gym after the last performance. Retreat should begin promptly at the conclusion.

## CRITIQUE

Winds and Percussion critique will be in the library, in front of the cafeteria, following the last percussion unit. Please see Winds and Percussion Contest Flow Map for reference.

Guard Units: There will not be a critique at this show.

## ADMISSION

**\$15.00** Adults

**\$10.00** Senior Citizens (65+ Must Show License)

**\$5.00** Student Spectators, that are not participating with a unit.

**FREE** - Children Under 5.

**CONCESSIONS:** Concessions will be available throughout the contest at the performance gym. Outside food or drink will not be allowed inside the school.

# Judson I.S.D. is a Clear Bag Policy District.

Please let your spectators know that they cannot enter the gym with bags that are not clear. This will avoid parents missing their child's performance for having to go back to their vehicles to drop off their non-



## NO PURSES. NO BAGS.



### Prohibited Bags

PROHIBITED ITEMS INCLUDE, BUT ARE NOT LIMITED TO:

- All purses, bags or containers larger than a small clutch bag
- Backpacks
- Binocular case – Binoculars may be worn around the neck
- Briefcases
- Camera bags
- Cinch bags
- Computer bags
- Coolers
- Fanny packs
- Luggage of any kind



Backpack Purse Camera Case



Binocular Case Fanny Pack Patterned Plastic Bag

### Approved Bags

**CLEAR TOTE**  
Plastic, vinyl or PVC – not exceeding 12" x 6" x 12"



12" 12" 6"

**PLASTIC STORAGE BAG**  
Clear, one (1) gallon, re-sealable



**SMALL CLUTCH PURSE**  
Approximately the size of your hand, but absolutely no larger than 5.5" x 8.5" (see our small guide sheet) with or without a handle or strap. Can be carried separately or within an approved plastic bag shown above.



5.5" 8.5" 3.5" 4" 5.5" 8.5"